

Custom All Aluminum Stacker Trailers

BUILT FOR SPEED

High Quality Trailers Built by Racers for Racers

SEMI, GOOSENECK, FIFTH WHEEL AND PULL-A-LONG TRAILERS

JOHN GETKATE STACKER TRAILER



Call for a Quote - 815.426.2761

www.tande-racetrailers.com



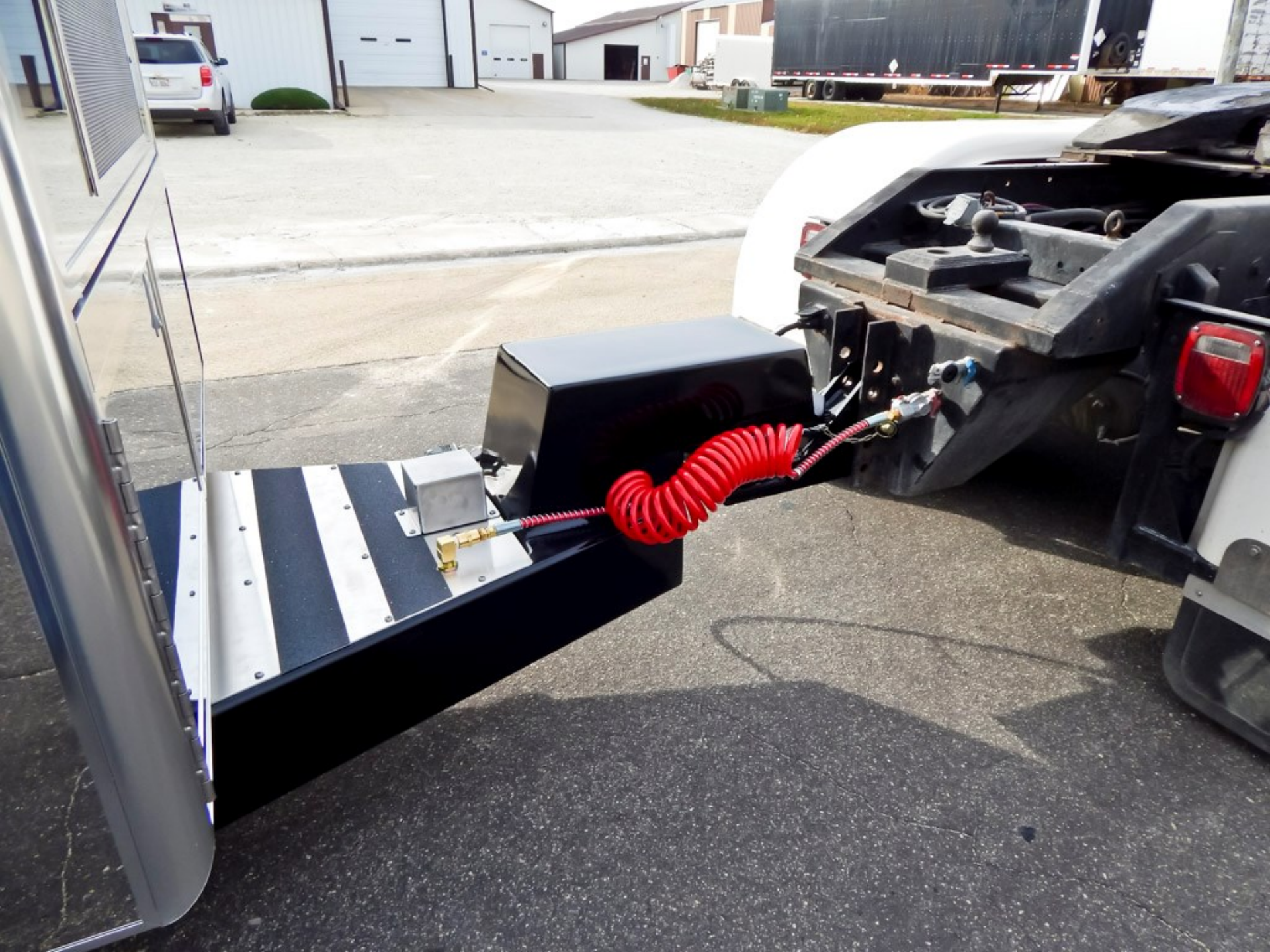
















WARNING
DO NOT
RE-ENTER

DANGER
HOT SURFACE

CAUTION **CAUTION** **WARNING** **CAUTION**
DO NOT TOUCH THE SURFACE OF THE UNIT WHILE IT IS OPERATING.
DO NOT TOUCH THE SURFACE OF THE UNIT WHILE IT IS OPERATING.
DO NOT TOUCH THE SURFACE OF THE UNIT WHILE IT IS OPERATING.
▲ DANGER
DO NOT TOUCH THE SURFACE OF THE UNIT WHILE IT IS OPERATING.



HYDRAS
TRAILER BRAKE ACT
www.hydrastaru
MADE IN THE U.S.A.



WARRANTY INFORMATION: THE WARRANTY DOES NOT COVER THE FOLLOWING: MISUSE OR ABUSE, FAILURE TO MAINTAIN, MODIFICATIONS, OR FAILURE TO FOLLOW THE OPERATING INSTRUCTIONS. THE WARRANTY IS VOID IF THE EQUIPMENT IS NOT USED IN ACCORDANCE WITH THE OPERATING INSTRUCTIONS. THE WARRANTY IS VOID IF THE EQUIPMENT IS USED IN A MANNER NOT INTENDED BY THE MANUFACTURER. THE WARRANTY IS VOID IF THE EQUIPMENT IS USED IN A MANNER THAT IS NOT SPECIFIED IN THE OPERATING INSTRUCTIONS. THE WARRANTY IS VOID IF THE EQUIPMENT IS USED IN A MANNER THAT IS NOT SPECIFIED IN THE OPERATING INSTRUCTIONS. THE WARRANTY IS VOID IF THE EQUIPMENT IS USED IN A MANNER THAT IS NOT SPECIFIED IN THE OPERATING INSTRUCTIONS.

DESCRIPTION	QUANTITY
...	...

ASSEMBLED IN THE U.S.A.
ELECTRICAL SYMBOLS: ...
AMERICAN ELECTRIC COMPANY

GENERATOR



SHORE POWER

DANGER
OF ELECTRICAL INJURY
...
NEUTRALIZER
SHORE CABLE
APPROPRIATE

DANGER
DE BLESSURES D'ORGANE ELECTRIQUE.
...
NEUTRALISATEUR
CÂBLE DE RIVE
APPROPRIÉ



















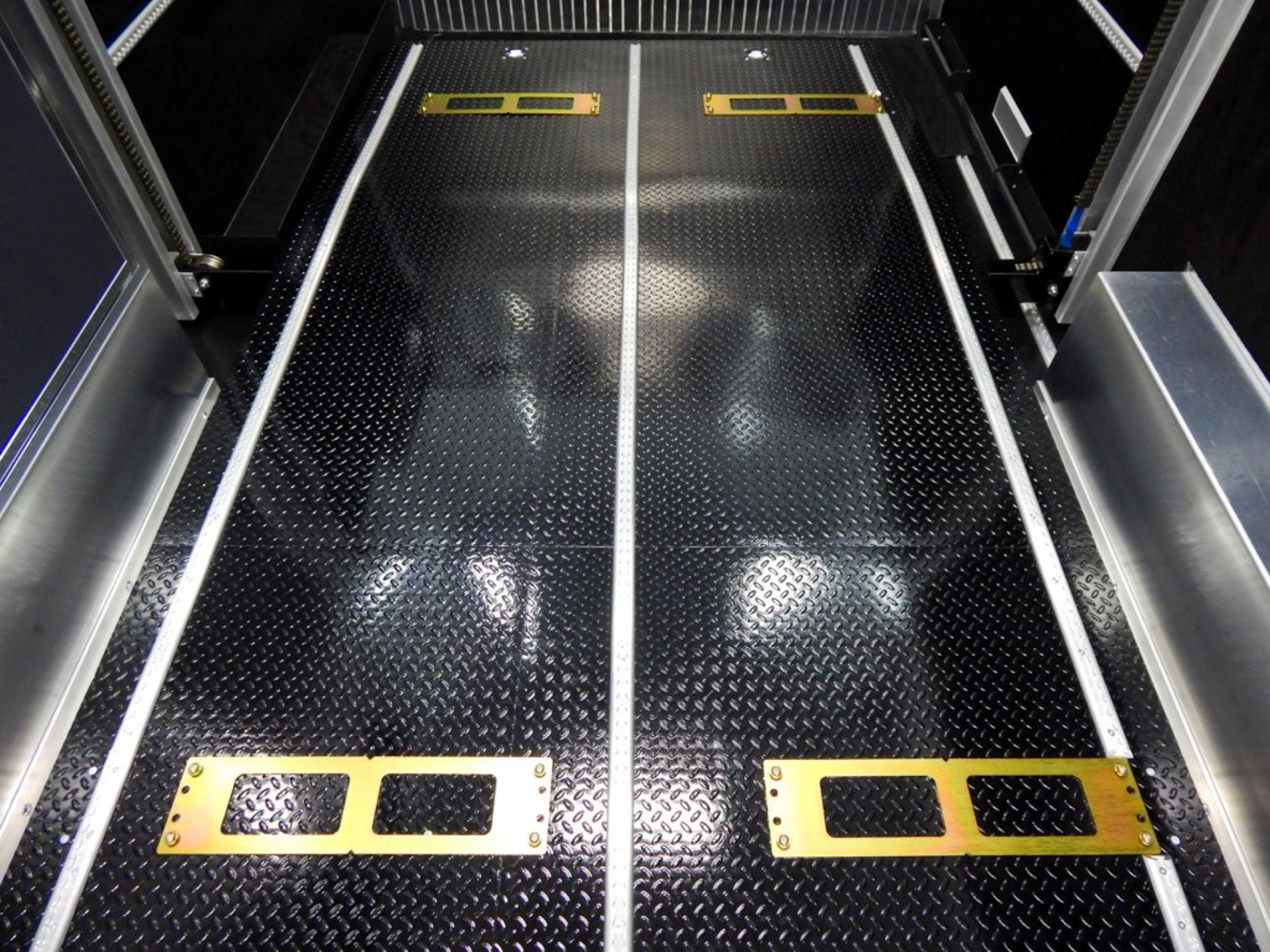
ATTENTION: DO NOT WALK ON THE PERFORATED FLOOR
OR YOU MAY BE INJURED OR DAMAGE THE FLOOR

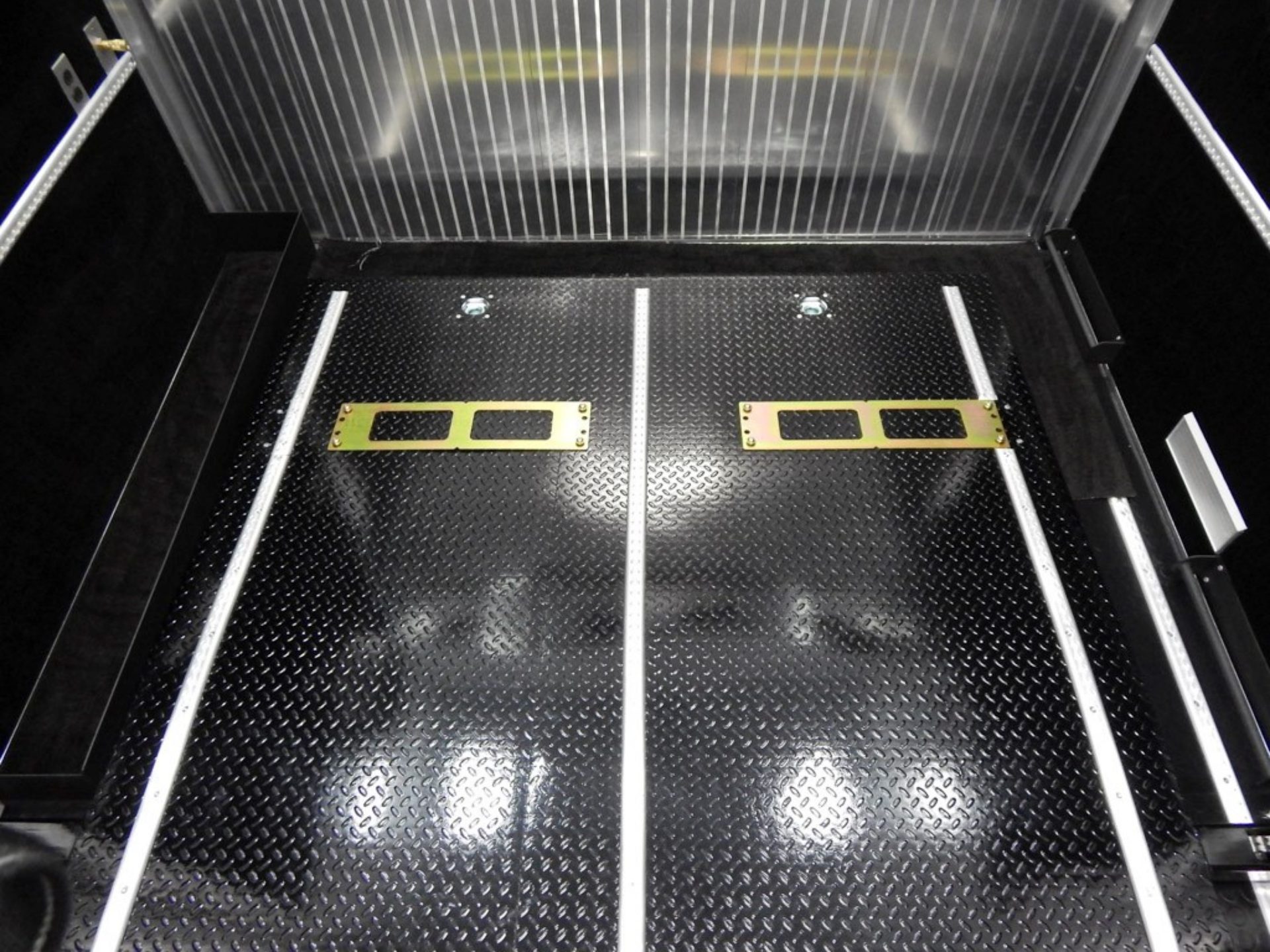






**DANGER: DO NOT WALK OUT OR STAND UNDER LIFT
UNLESS LIFT ONLY HAS BEEN SECURED BY SAFETY PINS!**









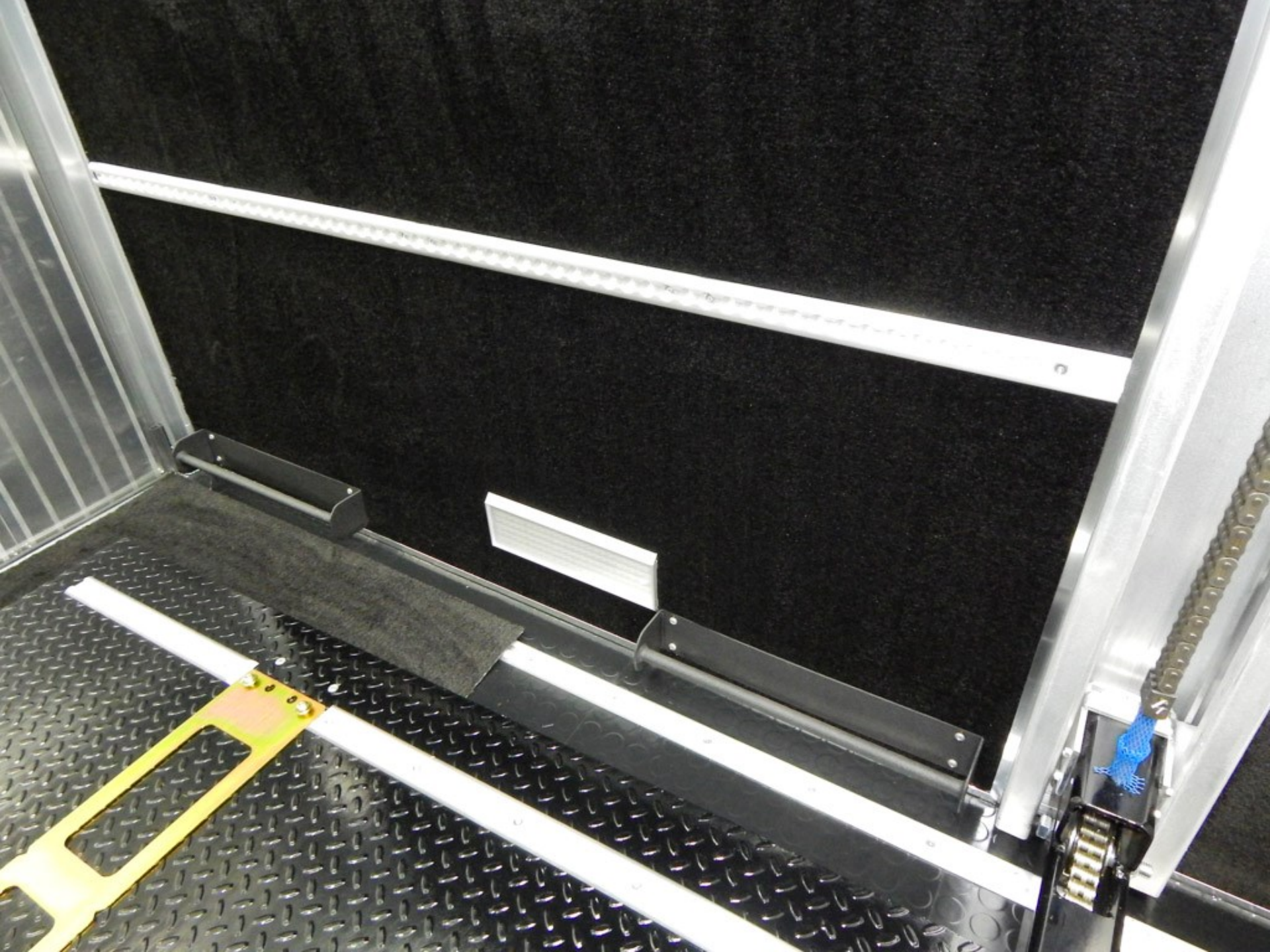




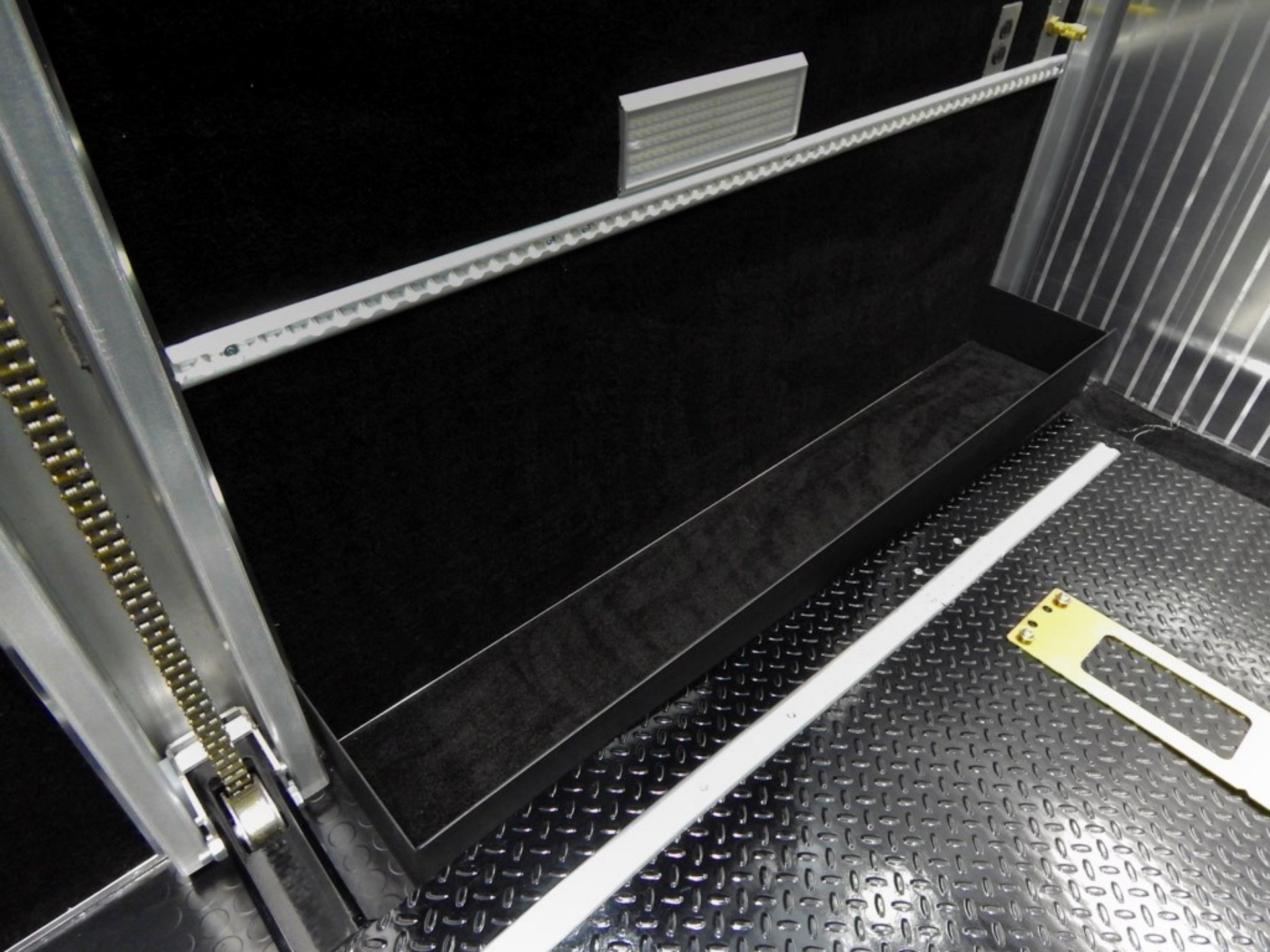






















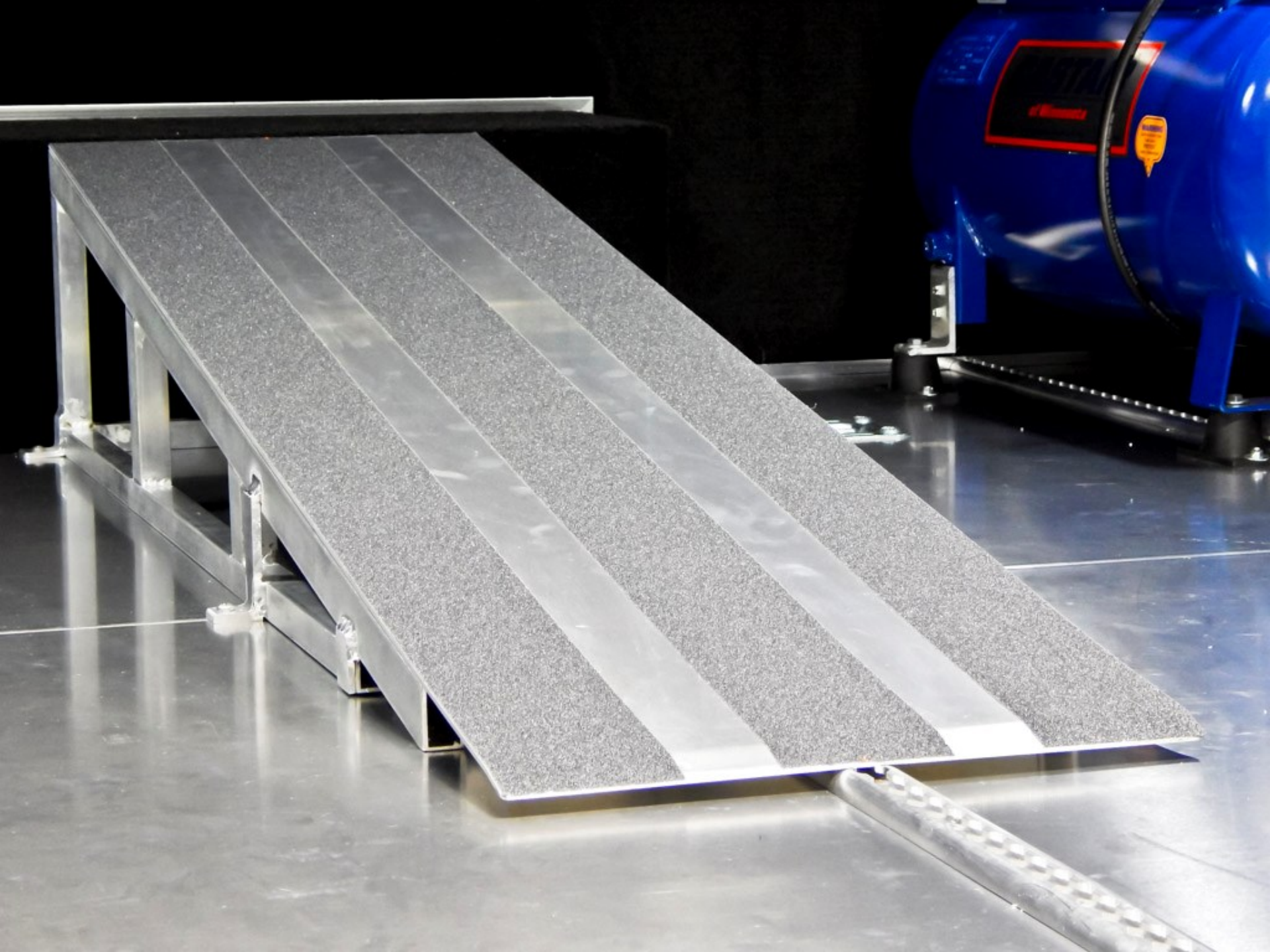






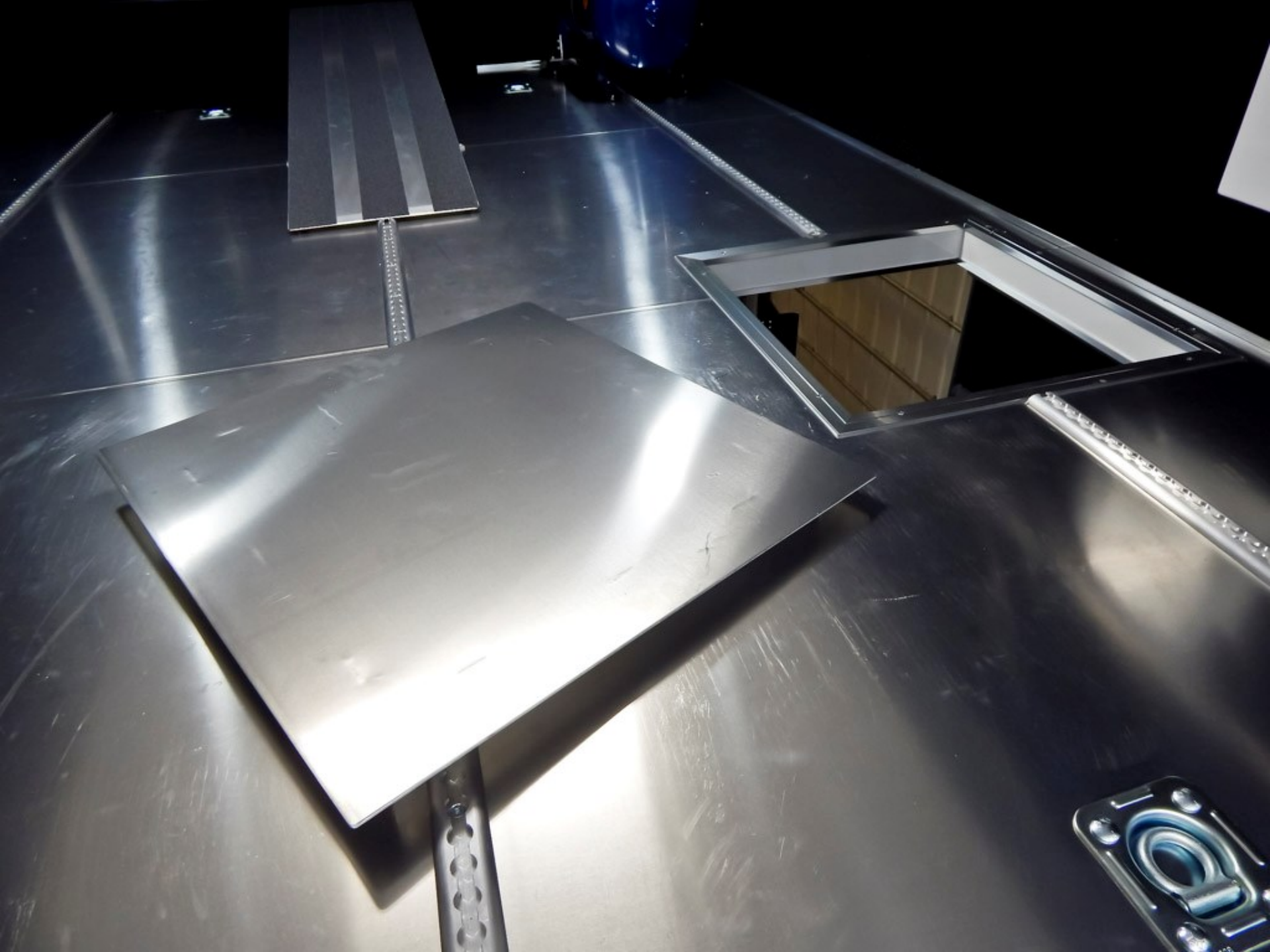










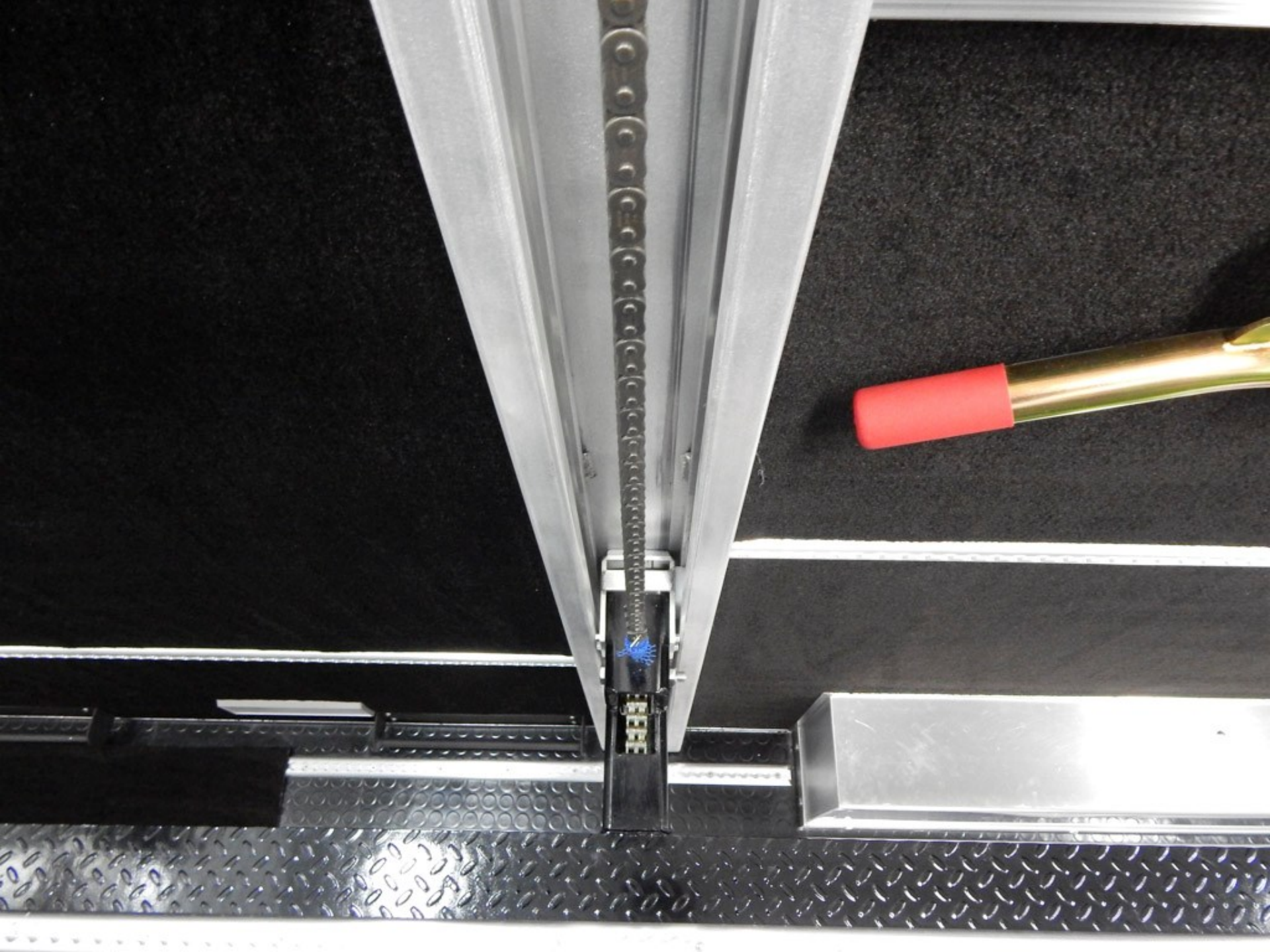




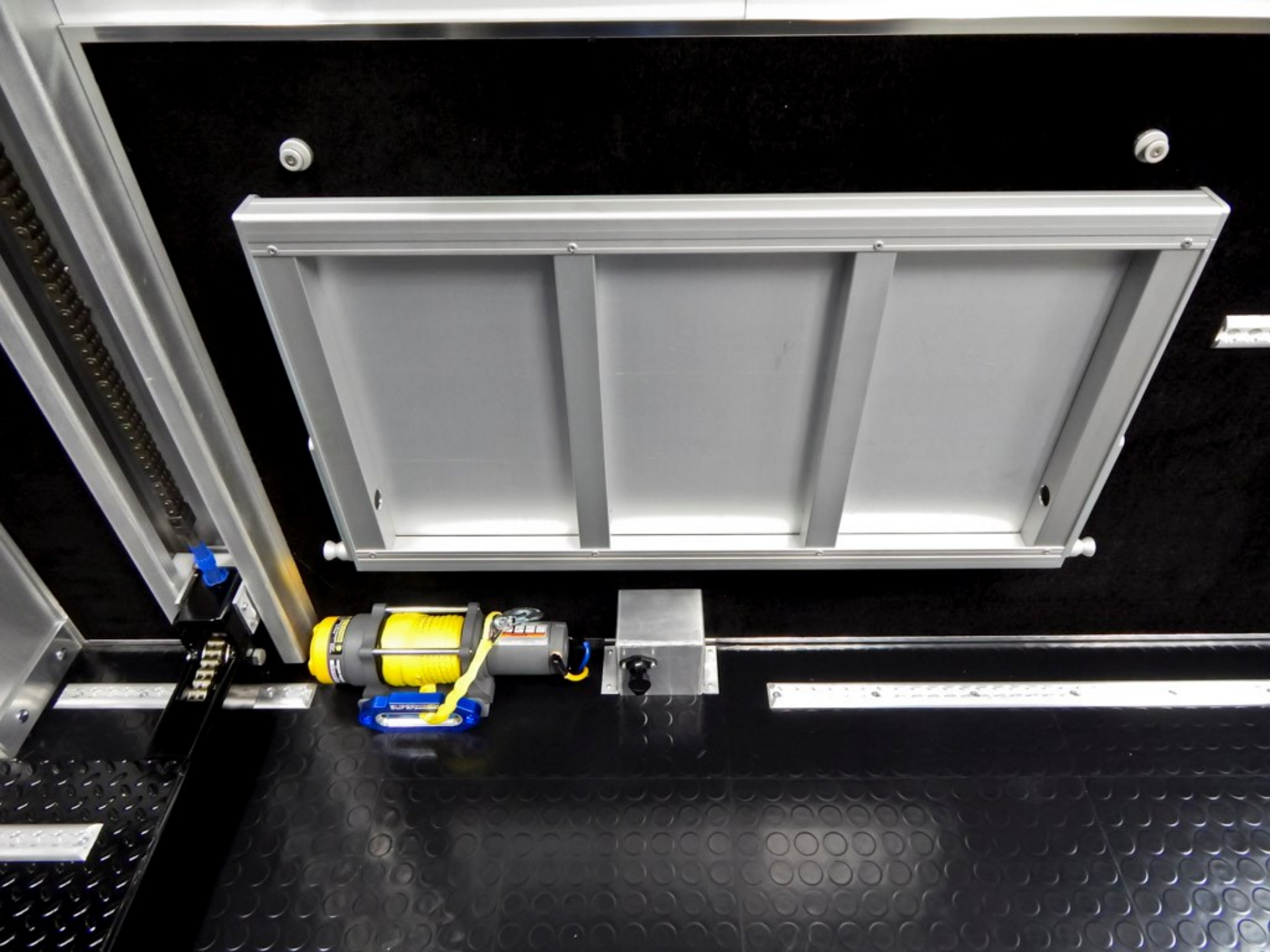
























⚠ DANGER

Vehicles and equipment powered by internal combustion engines and placed in recreational vehicles may cause carbon monoxide poisoning or asphyxiation, which could result in death or serious injury.

1. Do not ride in the vehicle storage area when vehicles are present.
2. Do not sleep in the vehicle storage area when vehicles are present.
3. Close doors and windows in walls of separation if treated when any vehicle is present.
4. Run fuel out of engines of stored vehicles after shutting off fuel at the tank.
5. Do not store, transport, or dispense fuel inside this vehicle.
6. Open the windows, openings, or air ventilation systems provided for venting the transportation area when vehicles are present.
7. Do not operate propane appliances, pilot lights, or electrical equipment when motorized vehicles are present.





POWER TECH

START / STOP

GN

HOURS

180

150

120

90

60

30

0

180

150

120

90

60

30

0

TEMP

OK

STOP

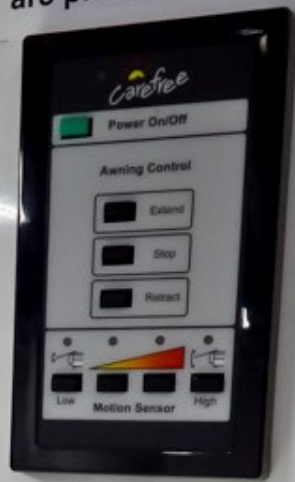
1234567890

1234567890

1234567890

1234567890

7. Do not operate pump or electrical equipment when motors are present.













DANGER
This unit contains hazardous materials. Do not touch or inhale. For more information, see the safety manual.

