

Custom All Aluminum Semi Trailers

BUILT FOR SPEED

High Quality Trailers Built by Racers for Racers

SEMI, GOOSENECK, FIFTH WHEEL AND PULL-A-LONG TRAILERS

2017 ELITE MSPTS / ENDERS PRO STOCK TRAILER



Call for a Quote - 815.426.2761

www.tande-racetrailers.com





















Custom Built Trailers by...

T & E ENT.
Auto Haulers
HERSCHER, IL
815-426-2761

LOWERING
TRAVEL

Custom Built Trailers by...
T & E
Auto Haulers
HERSCHER, IL
815-426-2761



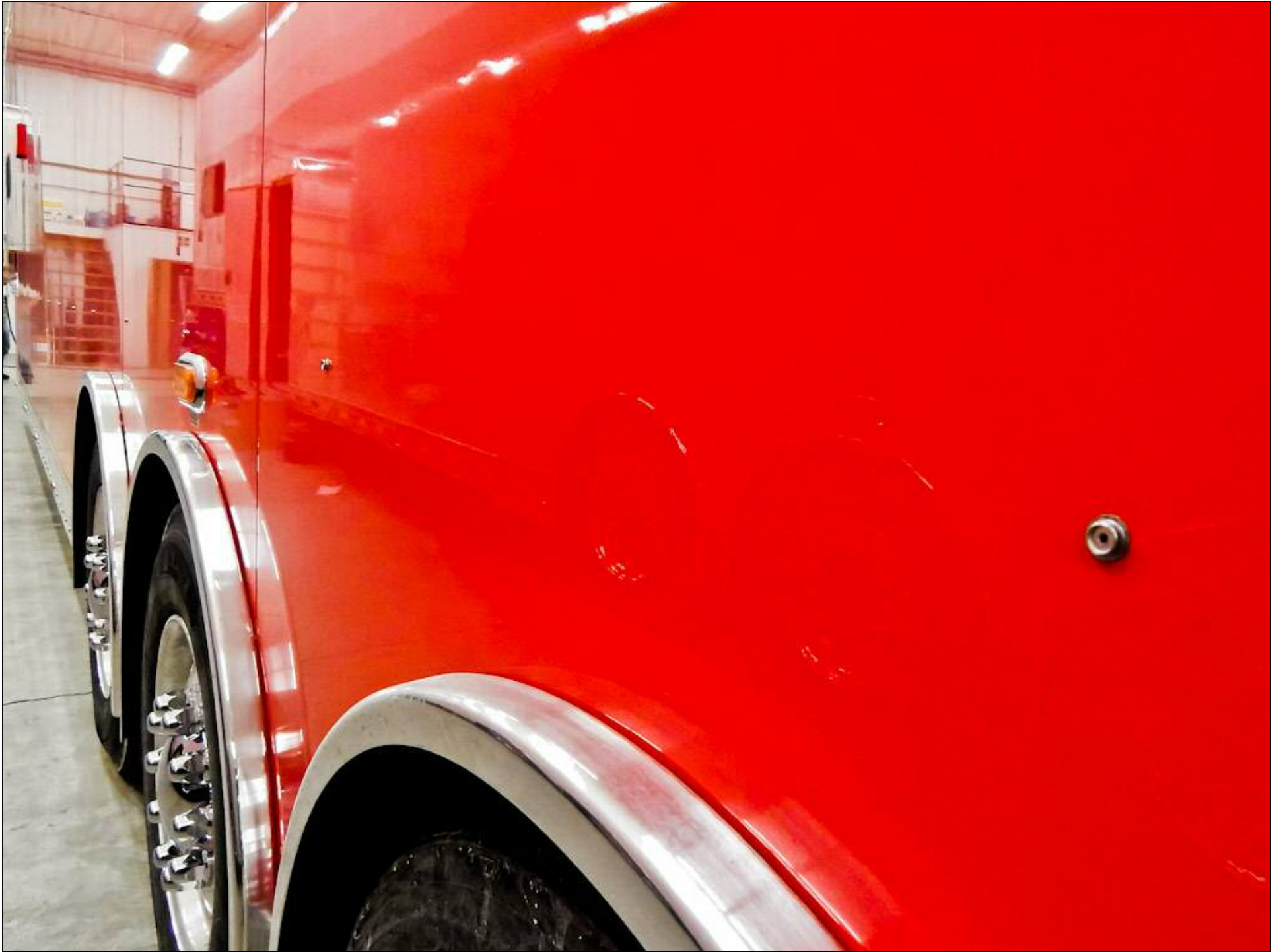


Detailed instructions
to the technician for all data flow
Service - 12/15/2014 14:00:00
[The following text is too small to transcribe accurately]

Custom Built Trailers by
T & E ENT.
Auto Haulers
BROOKFIELD, IL
708-433-4300

DA

























THINK
OUR AIM
NO ACCIDENTS



Custom Built Trailers by...

T & E ENT.

Auto Haulers

HERSCHER, IL.
815-426-2761

⚠ DANGER
DO NOT GET UNDER THIS TRAILER
This trailer is equipped with an air suspension and may tip suddenly and without warning lower several inches causing crushing injury or death.
Jack stands should be placed under all four corners of the frame of this trailer before any service or repairs are attempted.

⚠ WARNING
• Do not operate this trailer unless you have read and understand the safety information in the owner's manual.
• Failure to properly operate and maintain the towing vehicle and trailer can result in injury.

⚠ WARNING
• Do not operate this trailer unless you have read and understand the safety information in the owner's manual.
• Failure to properly operate and maintain the towing vehicle and trailer can result in injury.

⚠ CAUTION
DO NOT EXCEED MANUFACTURER'S RATING OR LOADING RECOMMENDATIONS.

⚠ CAUTION
SECURE ALL DOOR AND LATCHES BEFORE MOVING TRAILER.

⚠ WARNING
Do not walk on wet surfaces.

SM 11E







THINK
OUR WAY
NO ACCIDENTS













































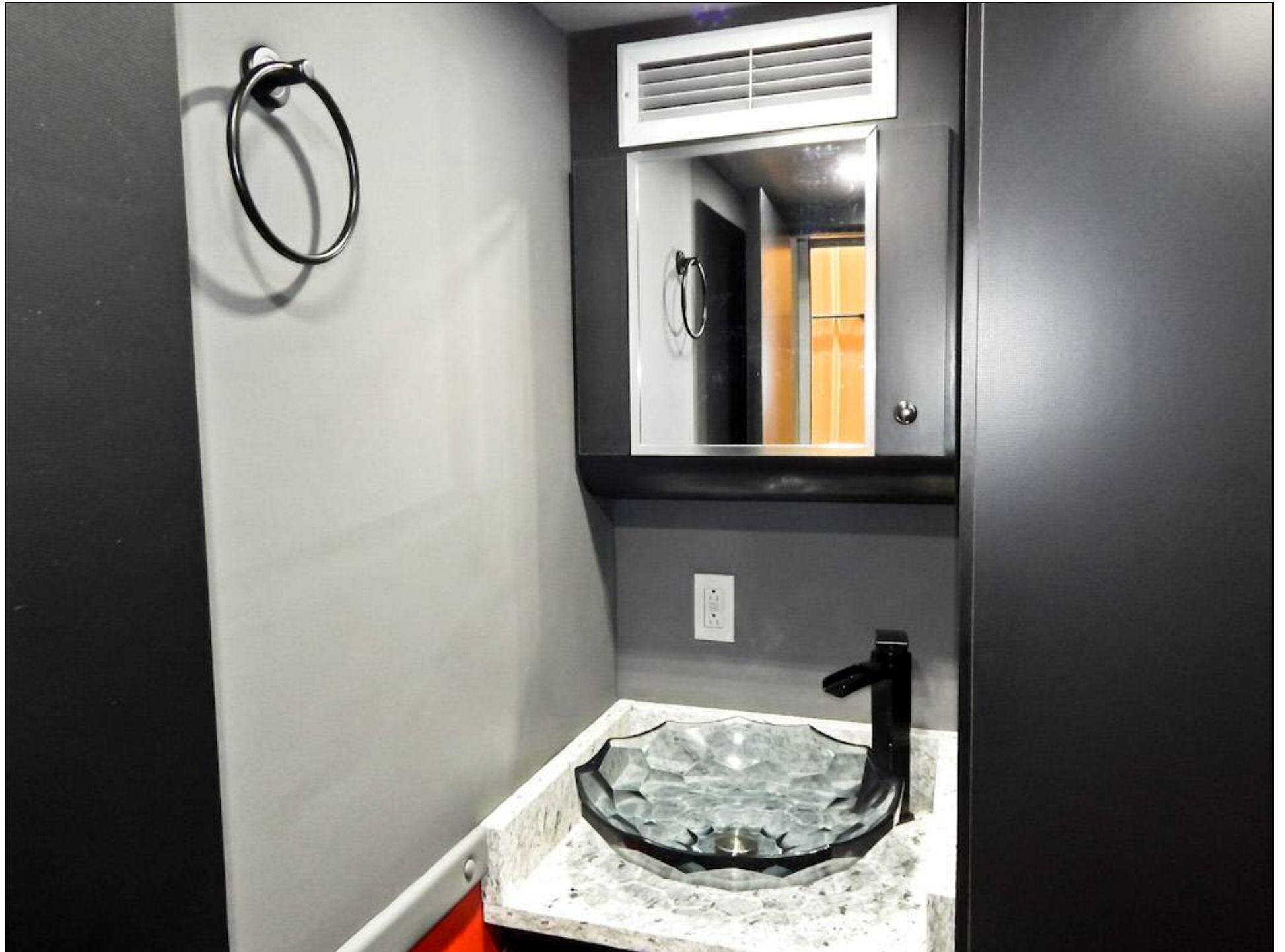
















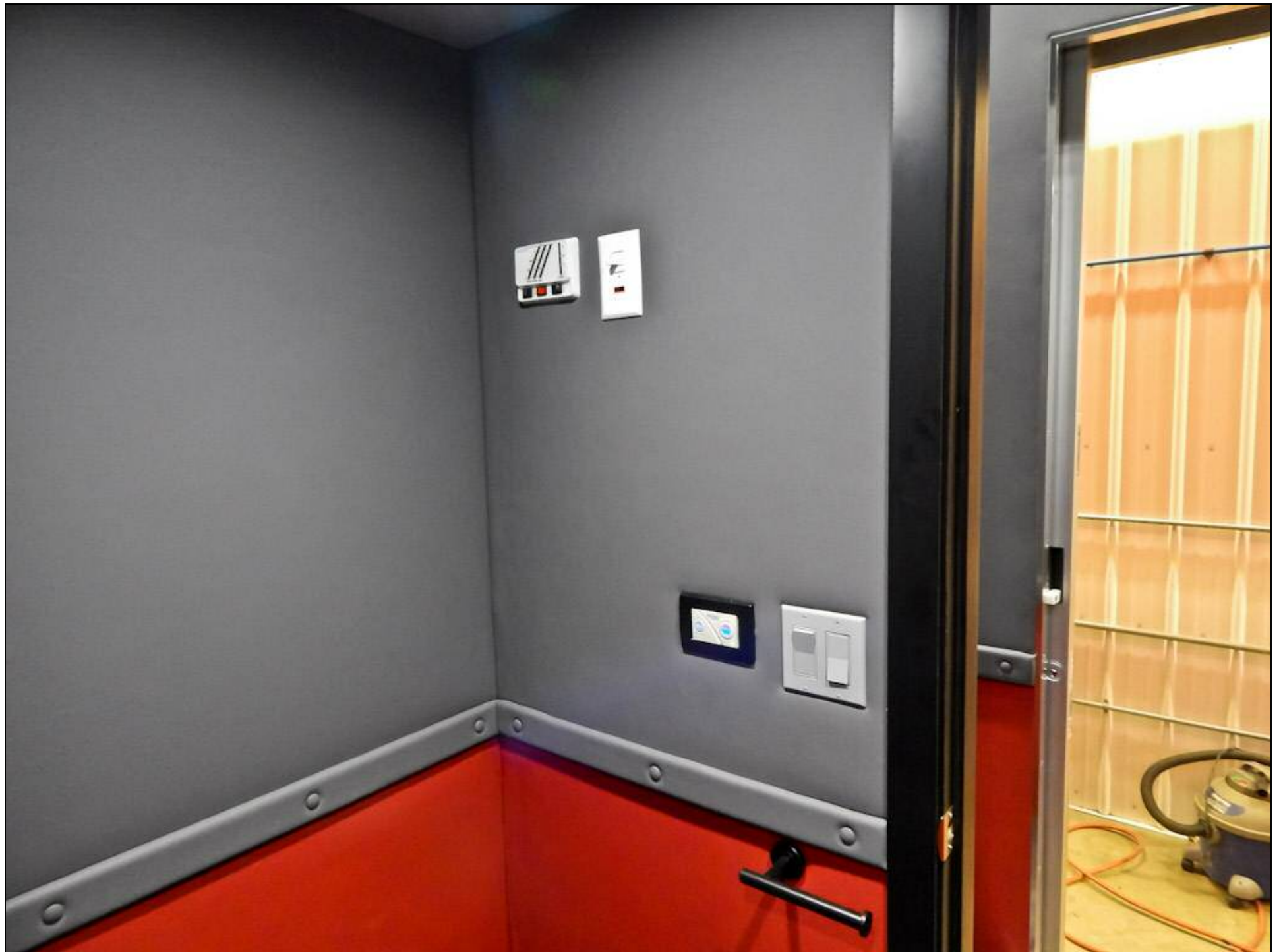






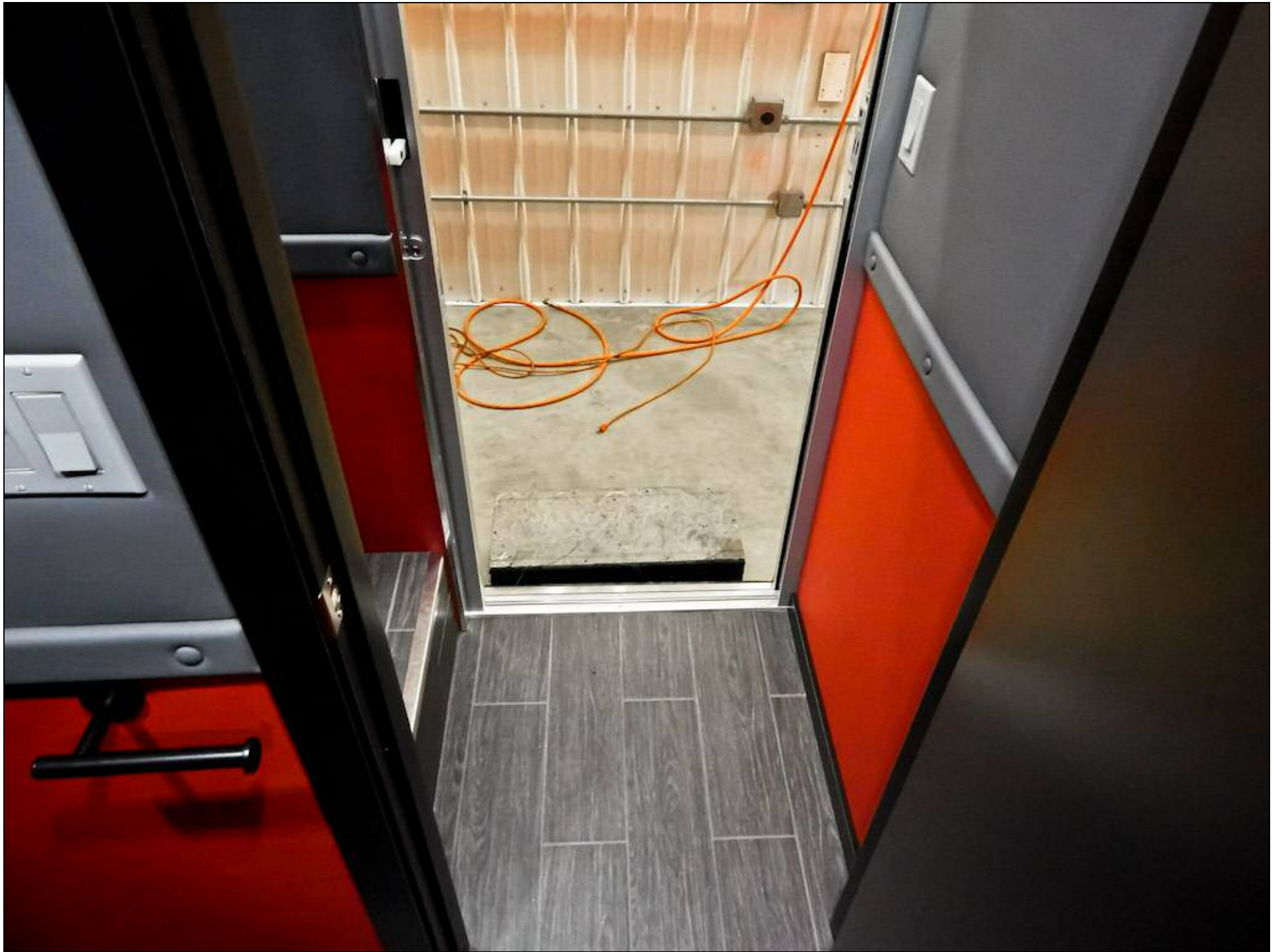






















































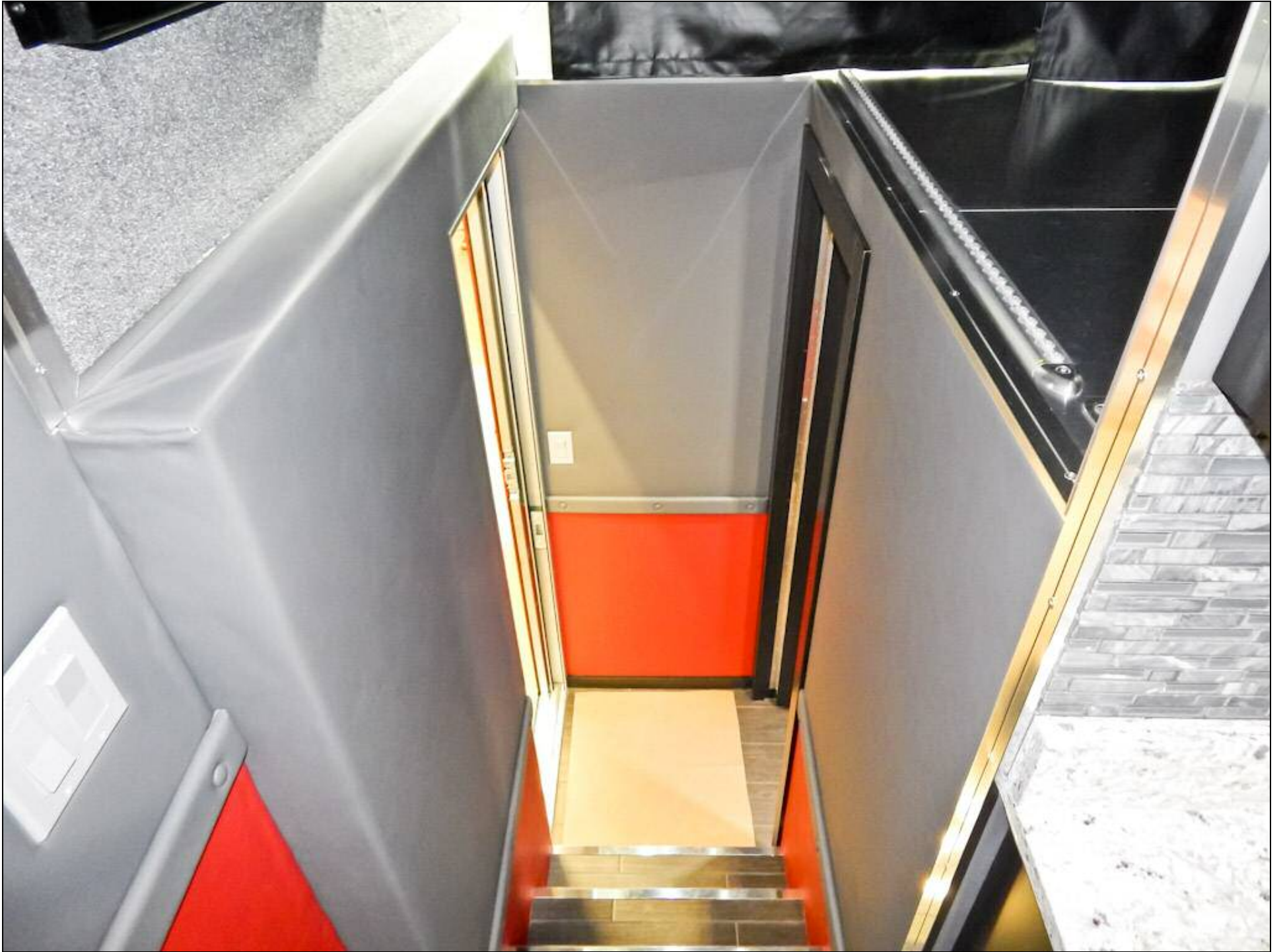






































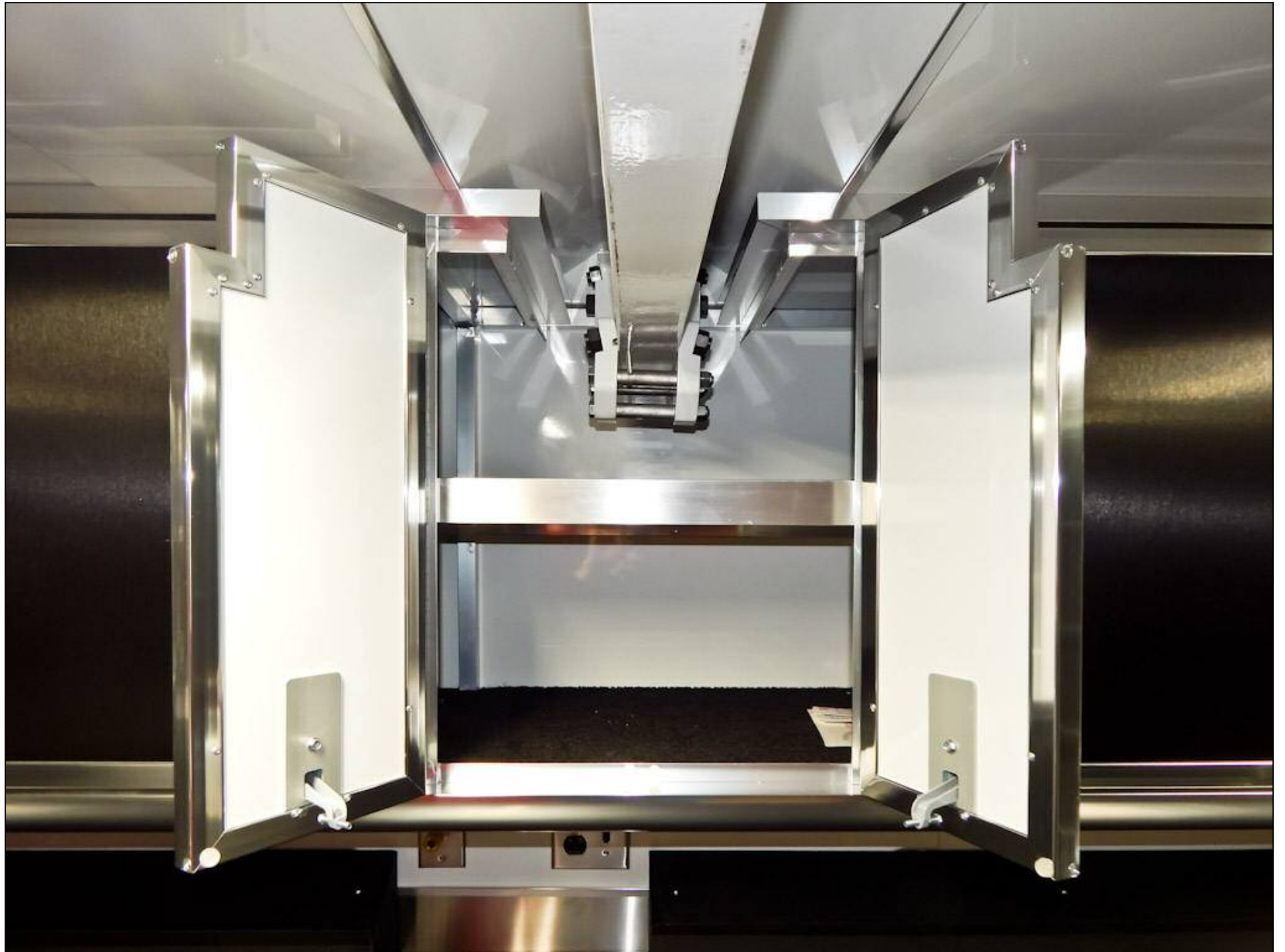
























WARNING: This product contains asbestos fibers which may be released during normal use. Asbestos fibers are known to cause lung cancer and other respiratory diseases. Avoid breathing dusts or fumes from this product. If you are exposed to asbestos fibers, you should stop work immediately and get fresh air. If you have any symptoms, such as coughing, wheezing, or shortness of breath, you should see a doctor. Do not use this product in a confined space. Do not use this product in a poorly ventilated area. Do not use this product near open flames or heat. Do not use this product near electrical equipment. Do not use this product near children or pets. Do not use this product near food or drink. Do not use this product near clothing or other items that may be damaged by heat. Do not use this product near flammable liquids or gases. Do not use this product near oxygen or other oxidizing gases. Do not use this product near electrical equipment. Do not use this product near children or pets. Do not use this product near food or drink. Do not use this product near clothing or other items that may be damaged by heat. Do not use this product near flammable liquids or gases. Do not use this product near oxygen or other oxidizing gases.



DANGER
Vehicles and equipment powered by internal combustion engines and stored in recreational vehicles may cause carbon monoxide poisoning or asphyxiation, which could result in death or serious injury.
The flammable liquids used to power these items can cause a fire or explosion, which can result in death or serious injury.
To reduce risk:
1. Do not ride in the vehicle storage area when vehicles are present.
2. Do not sleep in the vehicle storage area when vehicles are present.
3. Close doors and windows in walls of separation vehicles are present.
4. Run fuel and oil engines of stored vehicles after shutting off fuel oil line.
5. Do not drink, transport, or dispense fuel inside this vehicle.
6. Open the windows, openings, or an ventilation system provided for venting the transportation area when vehicles are present.
7. Do not operate propane appliances, pilot lights, or electrical equipment when motorized vehicles are present.

⚠ DANGER

Vehicles and equipment powered by internal combustion engines and placed in recreational vehicles may cause carbon monoxide poisoning or asphyxiation, which could result in death or serious injury.

The flammable liquids used to power these fans can cause a fire or explosion, which can result in death or serious injury.

- To reduce risk:
1. Do not ride in the vehicle storage area when vehicles are present.
 2. Do not sleep in the vehicle storage area when vehicles are present.
 3. Close doors and windows in walls of separation (if installed) when any vehicle is present.
 4. Run fuel out of engines of stored vehicles after shutting off fuel at the tank.
 5. Do not store, transport, or dispense fuel inside this vehicle.
 6. Open the windows, openings, or air ventilation systems provided for venting the transportation area when vehicles are present.
 7. Do not operate propane appliances, pilot lights, or electrical equipment when motorized vehicles are present.





Vehicles and combustion engines may cause asphyxiation, which can lead to injury. The flammable liquids stored in the vehicle can cause a fire or explosion, which can lead to death or serious injury. To reduce the risk of fire or explosion, do not ride in the vehicle if the warning label is present. Do not use the vehicle storage area when the vehicle is parked in well-ventilated areas.

























































